

Martin Gubri

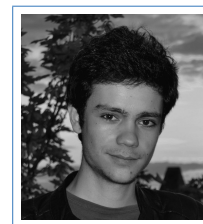
Looking for a PhD in ML Security

Pessac, France

✉ martin.gubri@framasoftware.org

📄 mg.frama.io

21 Oct. 1991



Education

- 2014–2015 **Specialized Master, Data Science, Ensaie ParisTech, with high honor.**
Courses on both theoretical & applied aspects of Machine Learning, Data Analysis & Econometrics with a emphasis on Computer Science & Big Data Processing and Analysis.
- 2012–2014 **Master's Degree, Statistics and Econometrics, Toulouse School of Economics, with highest honor (head of the class, 1st/28).**
Courses on Statistics, Data Analysis, Econometrics, Applied Mathematics & Programming.
- Since 2013 **MOOC, Coursera.**
Neural Networks and Deep Learning, Improving Deep Neural Networks, Structuring Machine Learning Projects, Computing for Data Analysis, Data Analysis, Computer Networks.
- 2011–2014 **Magistère, Economics and Statistics, Toulouse School of Economics & Paul Sabatier University, with highest honor (3rd/16).**
- 2011–2012 **Bachelor's Degree, Economics and Mathematics, Toulouse School of Economics.**
- 2009–2011 **Classe préparatoire aux grandes écoles, Lycée Montaigne, Bordeaux.**
Khâgne & Hypokhâgne B/L, Humanities, Social Science & Mathematics.

Work and volunteer experiences

- Since Oct. 2017 **Freelance Data Scientist & Independent Researcher.**
Freelance and Independent Researcher on ML Security between contracts.
- Since Jan. 2017 **Whitehat infosec contributions.**
26 XSS, RCEs on TeleMath server, etc. See full list of CVE ids on mg.frama.io.
- Oct. 2015 — **Ford–Mozilla Technology Exchange Fellow, ONG Derechos Digitales, Chile.**
Oct. 2016 Developer, Statistician and Technology Referent for various projects and reports about Computer Security, Privacy, Personal Data Protection, Cryptography, Net Neutrality & Censorship.
- Jun. 2015 — **R package development, Google Summer of Code for the R foundation.**
Aug. 2015 Implement new predictors from the research literature in the Spatial Econometrics R package *spdep*. Mentored by Roger Bivand & Giovanni Millo.
- Jun. 2014 — **Junior Researcher in Applied Spatial Econometrics, Blwhere consulting, Paris.**
Apr. 2015 Developing new methods to improve predictions using spatial interaction models for a business use case (intern for 3 months and employee later).
- Since 2012 **Member of the board of directors of Framasoftware.**
Major French-speaking FLOSS promoting non-profit organization. Co-president in 2017.

Publication

Gubri, M. (2018). Adversarial Perturbation Intensity Achieving Chosen Intra-Technique Transferability Level for Logistic Regression. *arXiv:1801.01953 [cs, stat]*. (link, pdf, code)

Computer skills

Programming	Python, R, Bash, Html/Css, C (basis)		
Statistics/ML	Scikit-learn, R, TensorFlow (basis)	Big Data	PIG, HDFS
Database	SQLite, MySQL, PG, Oracle, MongoDB	OS	GNU/Linux, Windows
Office	L ^A T _E X, LibreOffice, MS Office	VCS	Git

Linguistic skills

English	Good fluency TOEFL iBT Score: 101/120
French	Native language
Spanish	Good fluency

Interests

FLOSS, ML, Security, Statistics, Privacy, Skiing, Climbing

References can be provided upon request